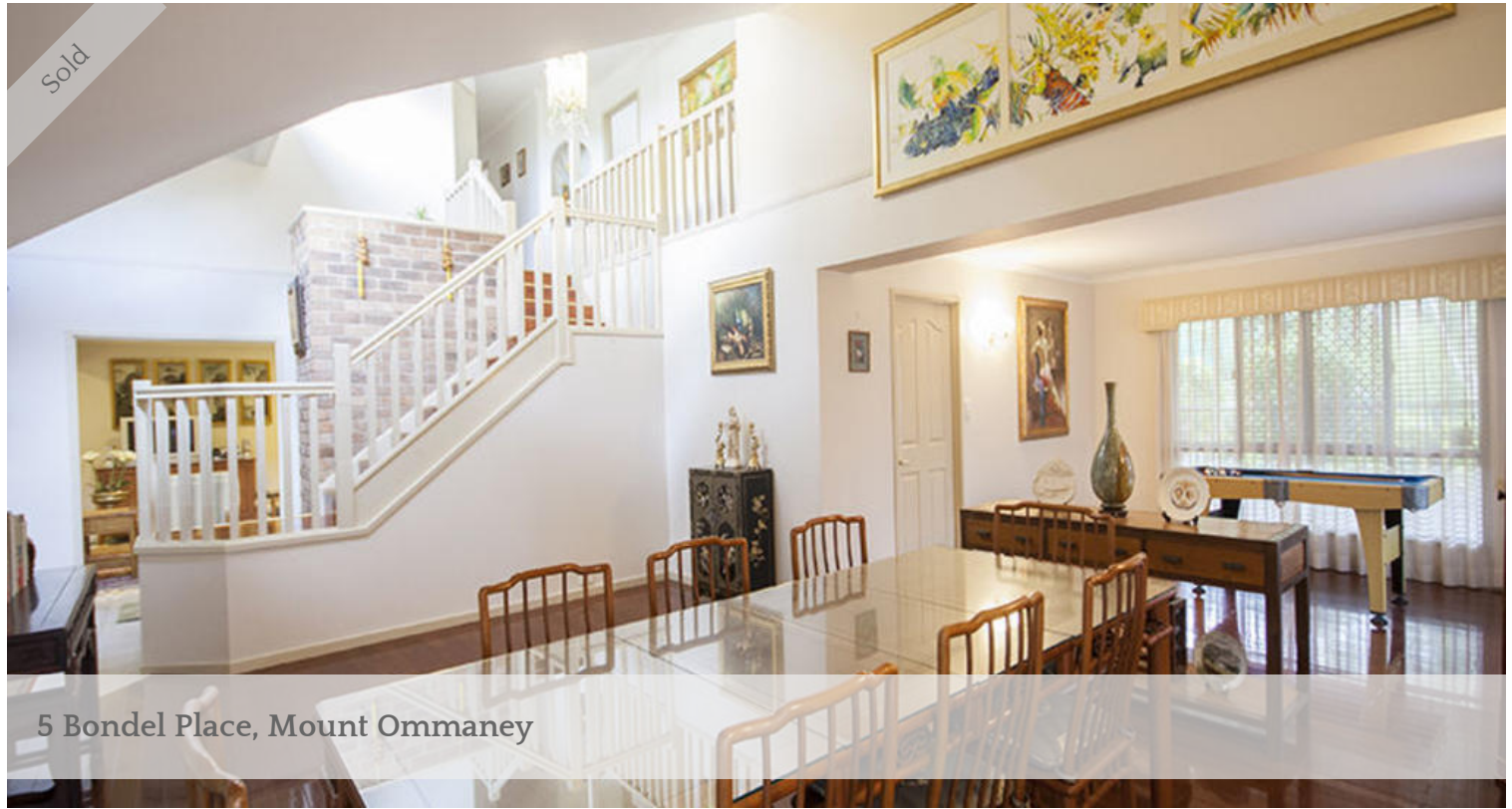


Sold



5 Bondel Place, Mount Ommaney



## BALINESE STYLE BEAUTY IN THE HEART OF POPULAR...

Solid, Roomy, Elegant, Private, Prime Location and at a honey of a price this Awesome Double Storey Spacious Insulated 4 Bedroom home with Study is simply a hands down Winner! Multiple impressive Low Maintenance Indoor / Outdoor Living and Entertainment areas might steal the Spotlight. Add approximately One Thousand Two hundred and thirty five squares metres of Land to love and Cherish and Wow you will be Won over! Easy stroll to Gertrude McLeod Golf Course, Mount Ommaney Shopping Centre and Public Transport.

### Featuring :-

- 4 Spacious and private Bedrooms (3 x Built-Ins, Master : Walk-in Robe)
- Study
- 3 x Bathrooms (Master : Ensuite, 1 x Two-Way Bathroom, 1 x Bathroom (down stairs))
- 4 X Air conditioners
- Separate Formal Lounge and separate Formal Dining rooms
- Family / Meals area
- Spacious Rumpus area

The above information provided has been furnished to us by the vendor/s. We have not verified whether or not that information is accurate and do not have any belief in one way or the other in its accuracy. We do not accept any responsibility to any person for its accuracy and do no more than pass it on. All interested parties should make and rely upon their own inquiries in order to determine whether or not this information is in fact accurate.

🛏 4 🚿 3 🚌 2

<b>Price</b>	SOLD
<b>Property Type</b>	residential
<b>Property ID</b>	1
<b>Land Area</b>	1,235 m2

### Agent Details

Steve Hoo - 0414 383 228

### Office Details

Optime Properties  
42 Sandalwood St Heathwood, QLD,  
4110 Australia  
07 3376 2363

OPTIME PROPERTIES

